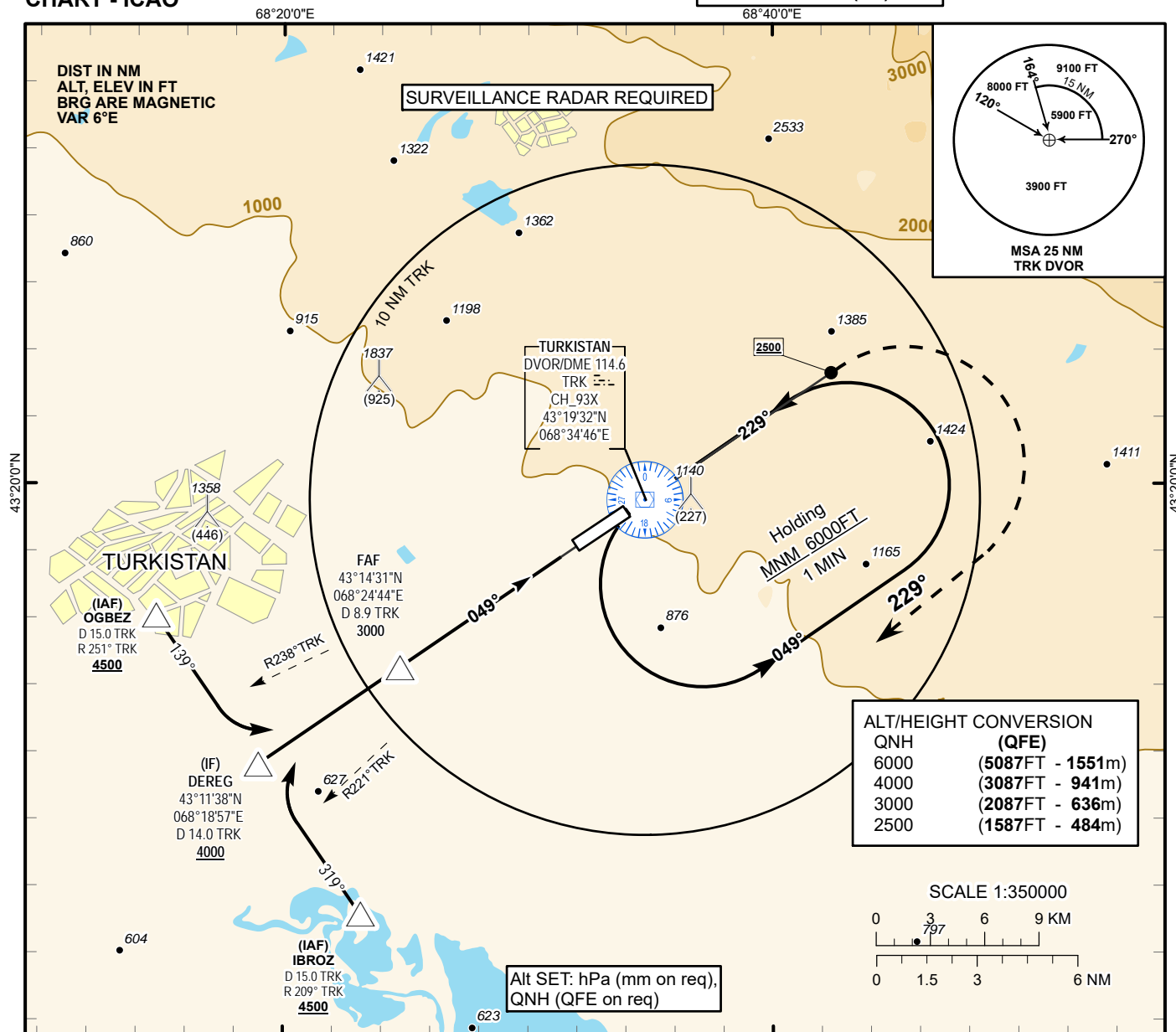


INSTRUMENT
APPROACH
CHART - ICAO

AERODROME ELEV **989 FT**
HEIGHTS RELATED TO
THR RWY 05 - ELEV **913 FT**

TURKISTAN TOWER 131.3
TURKISTAN ATIS (EN) 124.4
TURKISTAN ATIS (RU) 118.3

TURKISTAN
VOR/DME Y
RWY 05

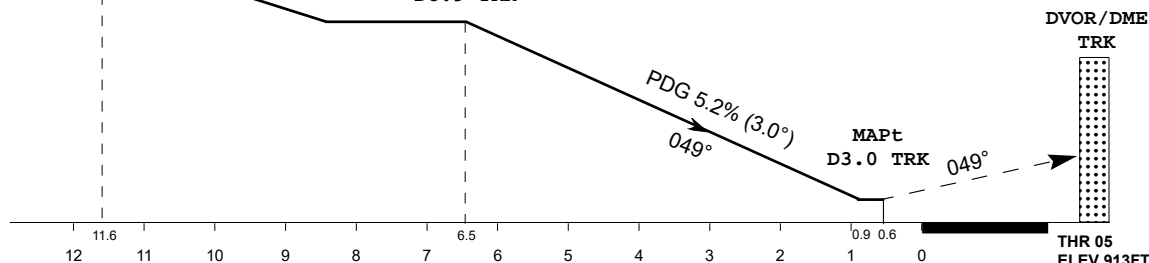


MISSED APPROACH
Climb on track 049°,
at 2500 ft or above,
turn RIGHT on track 229°
climbing to 4500 ft or above,
then as directed.
Missed approach turn
speed limited to
240 Kt IAS maximum.

IF
DEREG
D14.0 TRK
4000

FAF
3000
D8.9 TRK

TRANSITION ALT 10000 FT



| Aircraft Category | | A | B | C | D | DIST to THR | NM | 6.5 | 6.0 | 5.0 | 4.0 | 3.0 | 2.0 | 1.0 |
|--|---------|-----------|-----------|-----------|-----------|------------------|---------|------|------|------|------|------|------|------|
| Straight-in Approach OCA/H | | | | | | DME TRK | NM | 8.9 | 8.4 | 7.4 | 6.4 | 5.4 | 4.4 | 3.4 |
| | VOR/DME | 1220(310) | 1220(310) | 1220(310) | 1220(310) | ALTITUDE | FT | 3000 | 2872 | 2554 | 2236 | 1917 | 1599 | 1280 |
| | | | | | | HEIGHT | FT | 2087 | 1959 | 1641 | 1323 | 1004 | 686 | 367 |
| Aerodrome Operating Minima MDH ft x RVR(CMV) | | | | | | | | | | | | | | |
| | | | | | | GS | Kt | 80 | 100 | 120 | 140 | 160 | 180 | |
| | | | | | | Desc.Rate (5.2%) | ft/min | 420 | 530 | 640 | 740 | 840 | 950 | |
| | | | | | | FAF-MAPt | min:sec | 4:25 | 3:32 | 2:57 | 2:31 | 2:12 | 1:58 | |

TURKISTAN
VOR/DME Y RWY05 AERONAUTICAL DATA TABULATION

| VOR approach to RWY05 from IBROZ, DEREГ, OGBEZ | | |
|--|---------------|------------------|
| | | |
| Fix/point | Coordinates | |
| | | |
| OGBEZ (IAF) R251°, D15.0 TRK | 43°16'05.00"N | 068°14'47.01"E |
| IBROZ (IAF) R209°, D15.0 TRK | 43°7'09.8"N | 068°23'06.5"E |
| DEREG (IF) D11.6 ITR, D14.0 TRK | 43°11'37.5"N | 068°18'57.1"E |
| D8.9 TRK (FAF) | 43°14'31.3"N | 068° 24' 43.5"E |
| THR RWY23 | 43°19'10.27"N | 068° 34' 01.98"E |
| Final approach descent angle is 3.0° | | |